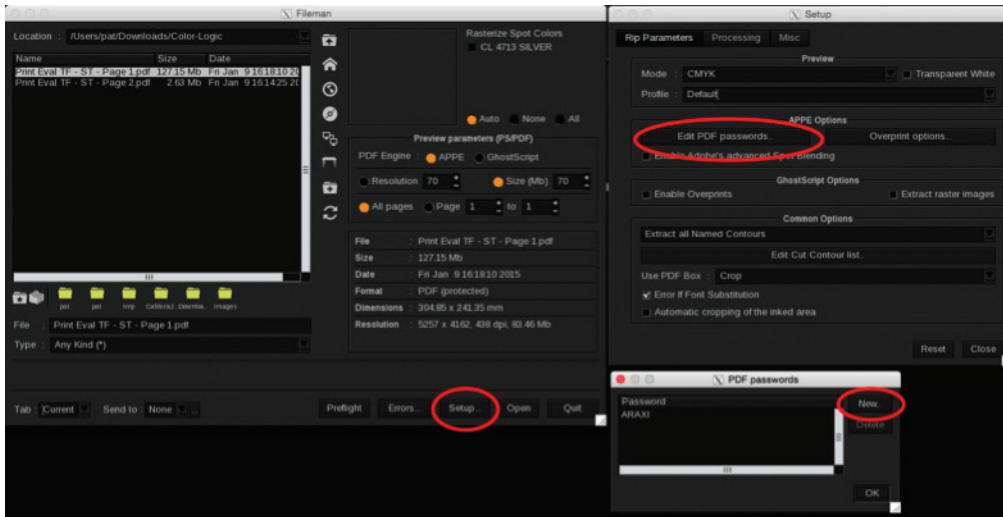
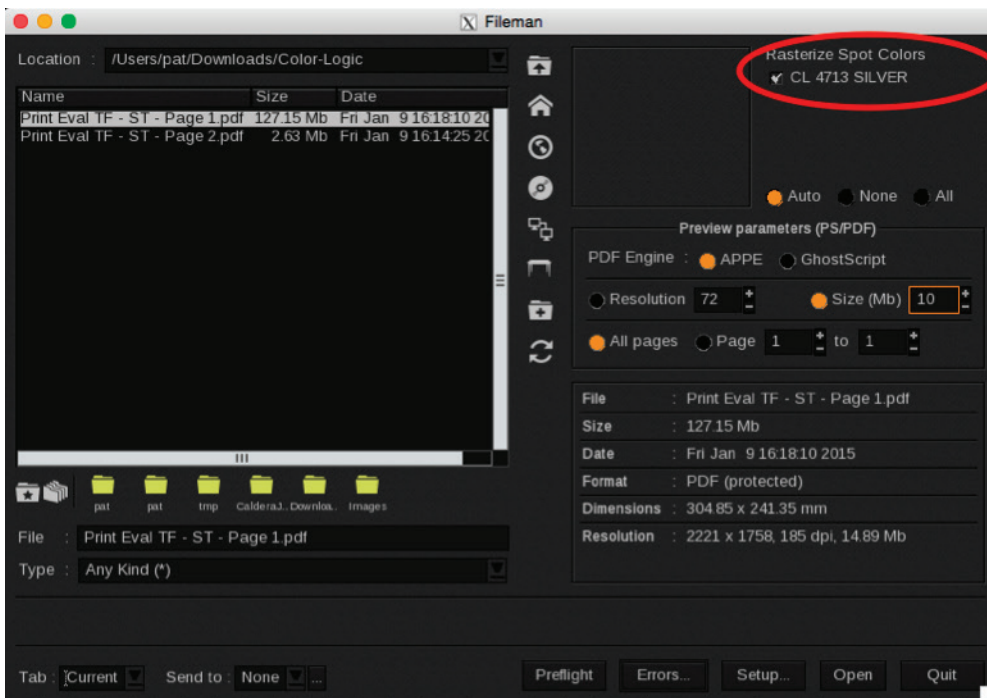


NOTE: For PDFs with password protection, please use the Adobe PDF Print Engine License (APPE) and input your password.

- Open your file.
- Open Fileman
- If the file has a password – In the Setup window of Fileman under APPE Options add the PDF Password

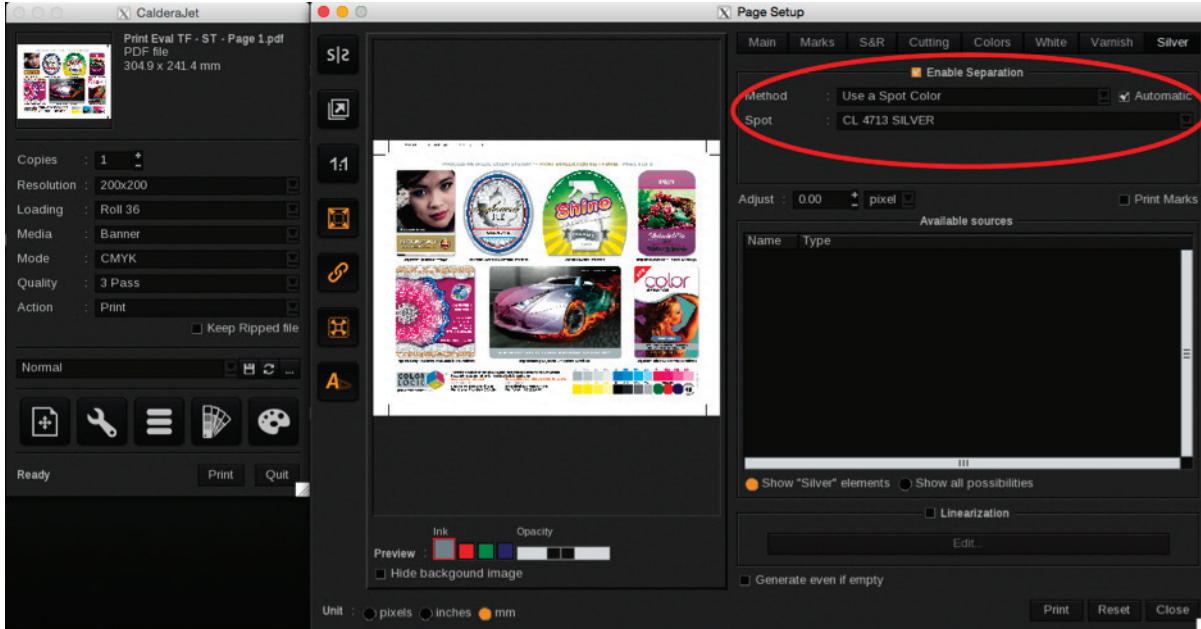


- Select Your file
- Check the « **CL 4713 SILVER** » in the rasterisation option – This enables the preview to include the Silver Spot color

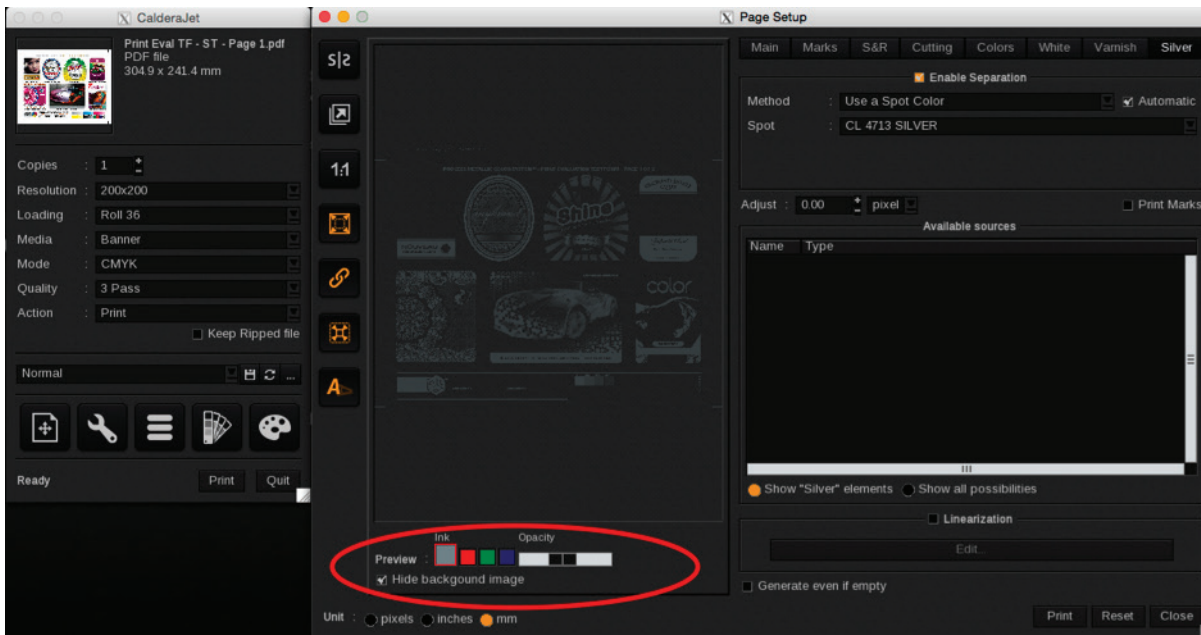


To output the Color-Logic separation for printing with Silver Ink

- Drag your file to the Printer
- Open the Layout Window
- Select the Silver Tab
- Check « Enable Separation »
- Choose : « Use a Spot Color »
- Select « CL 4713 SILVER » as Spot

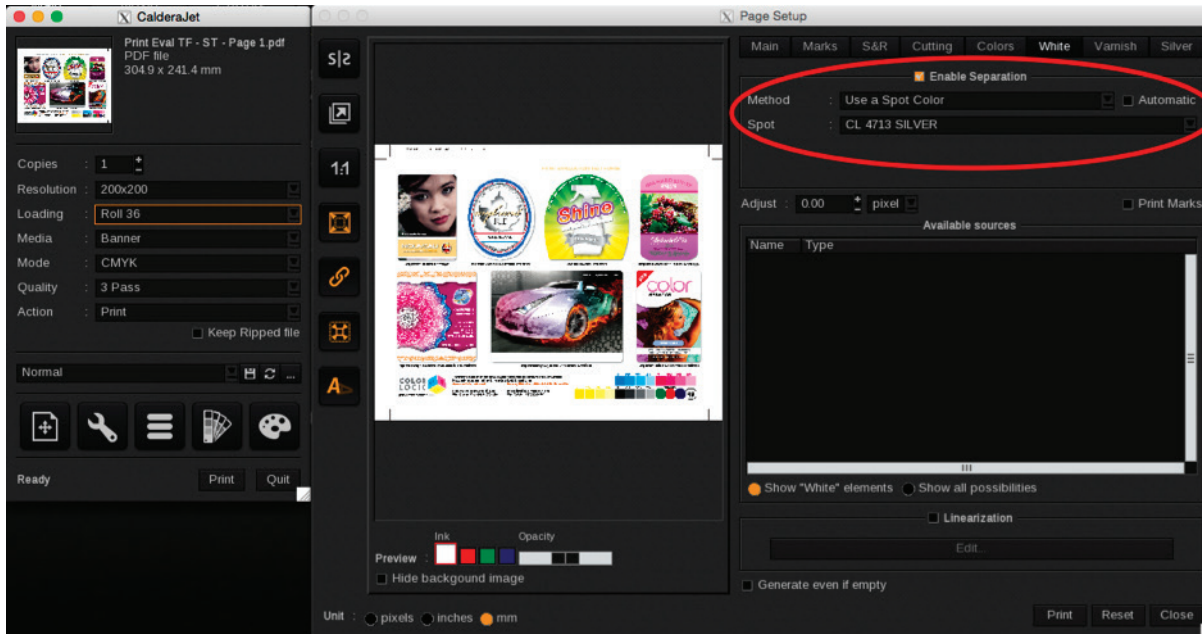


You can check the « **Hide background Image** » to see only the Silver channel

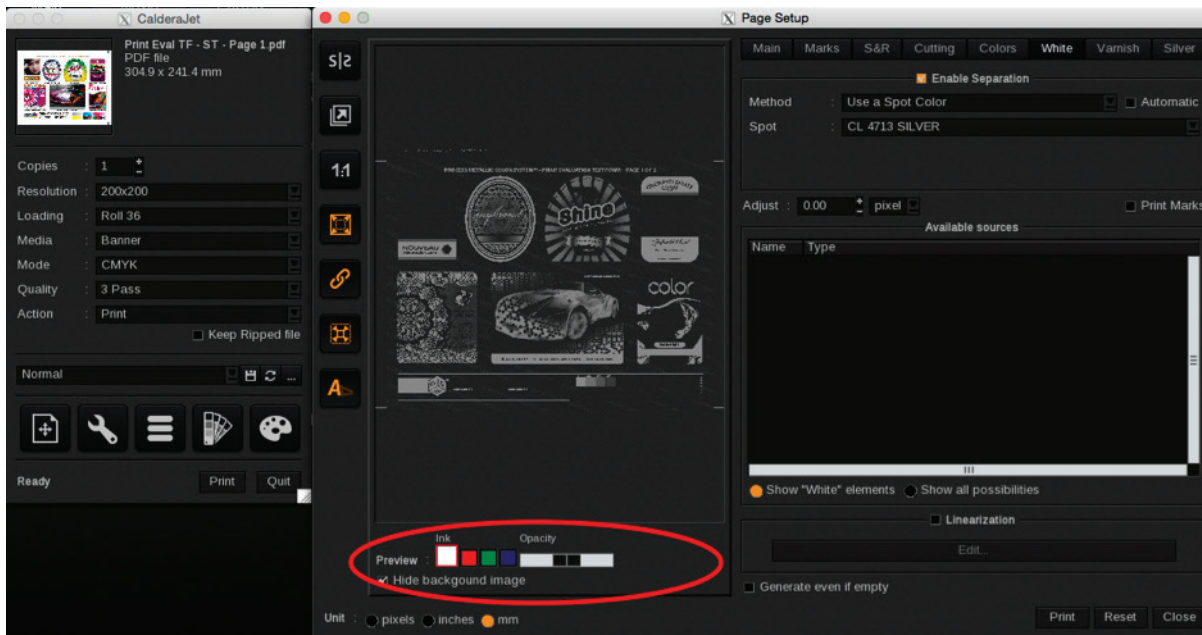


To output the Color-Logic spot color for printing with White Ink

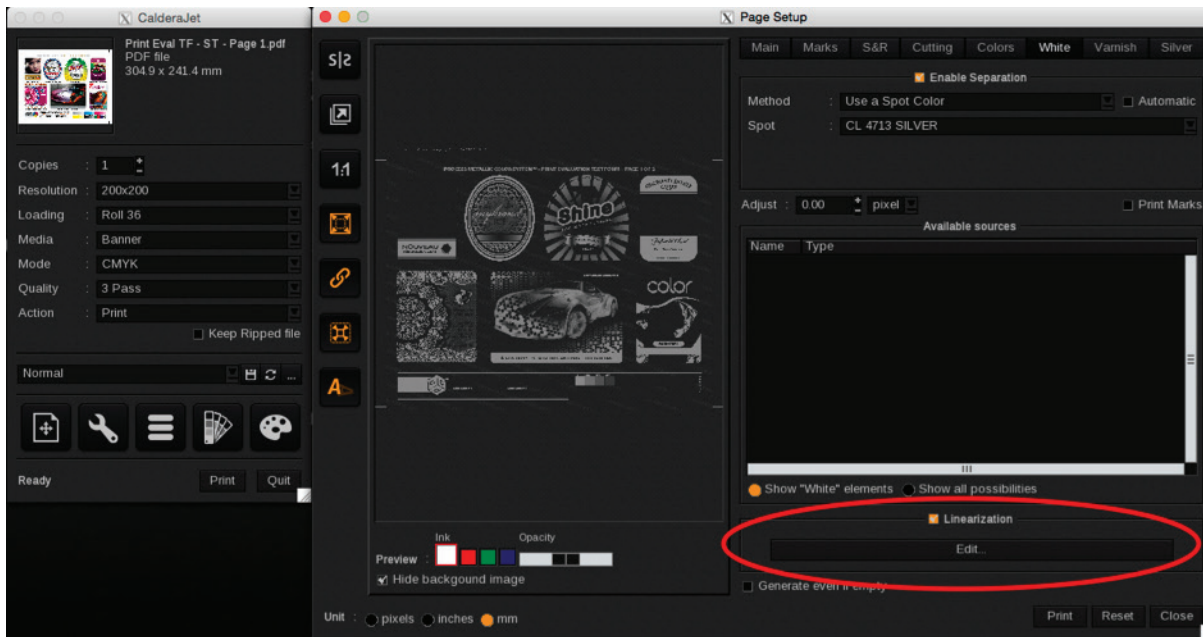
- Drag your file to the Printer
- Open the Layout Window
- Select the White Tab
- Check « **Enable Separation** »
- Choose : « **Use a Spot Color** »
- Select « **CL 4713 SILVER** » as Spot



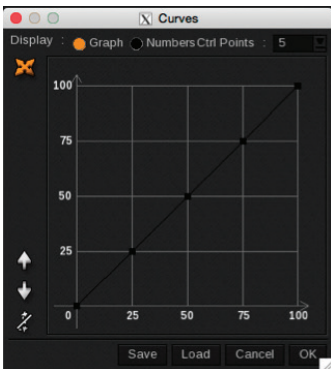
You can check the « **Hide background Image** » to see only the Color-Logic spot channel channel (CL 4713 SILVER)



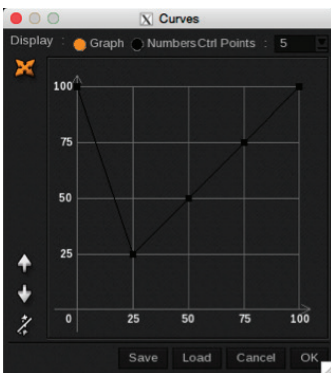
Enable Linearisation and press the **Edit** button



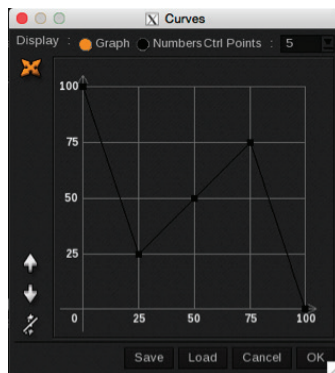
The following Window will appear. It is here that we need to invert the curve.



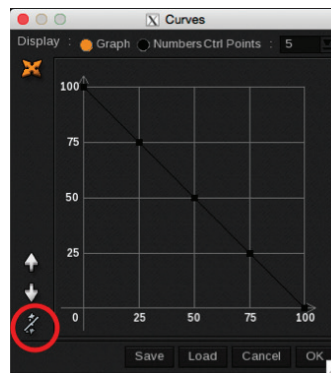
Move the 0 to 100



Move the 100 to 0



Click the « **Straight line icon** »



If you are applying a specific curve to your white ink, input the details as inverted (23% would become 77%, 64% would become 36% etc.

TIP: You can use the **Save** button to Save and Load the curve for future use.

Supplemental technical support notes:

It may be required to set your RIP with the following settings...

Issue: Failure to display the job correctly at the RIP

Solution: Under the Special pull down menu, select APPE Config and select as CMM Adobe instead of the default Caldera. Then reload your file.



Issue: Failure to output the Color-Logic spot separation

Solution: Under the Color Management settings, disable the input profile and set the same input profile as a simulation profile.

