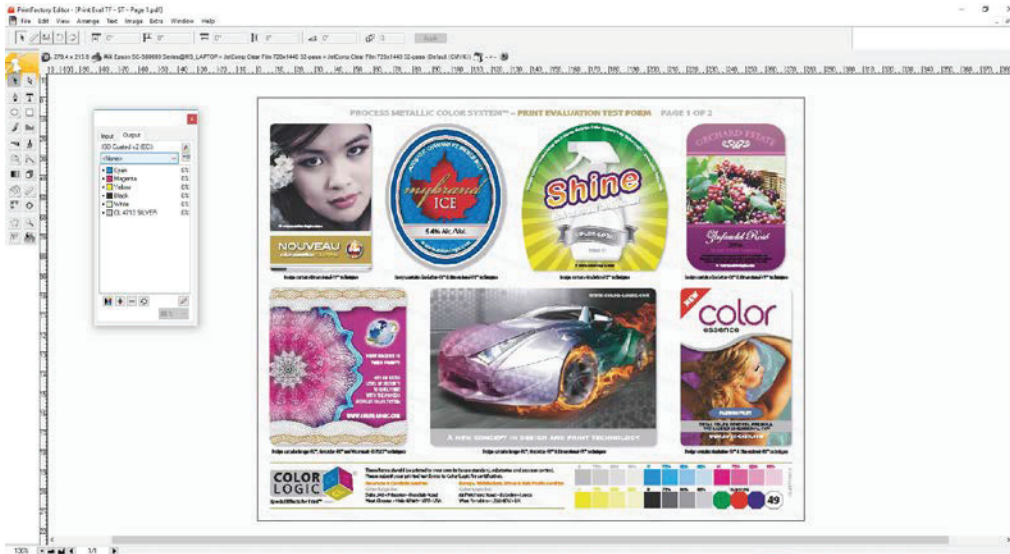
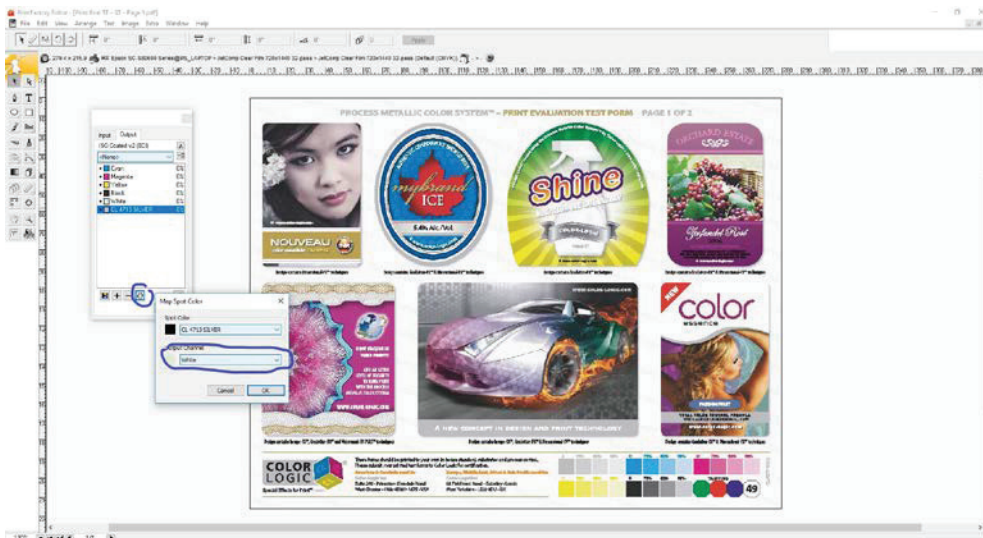


To print on Metallic film using White ink in PrintFactory – **Requires PrintFactory 5.0.20 or higher**

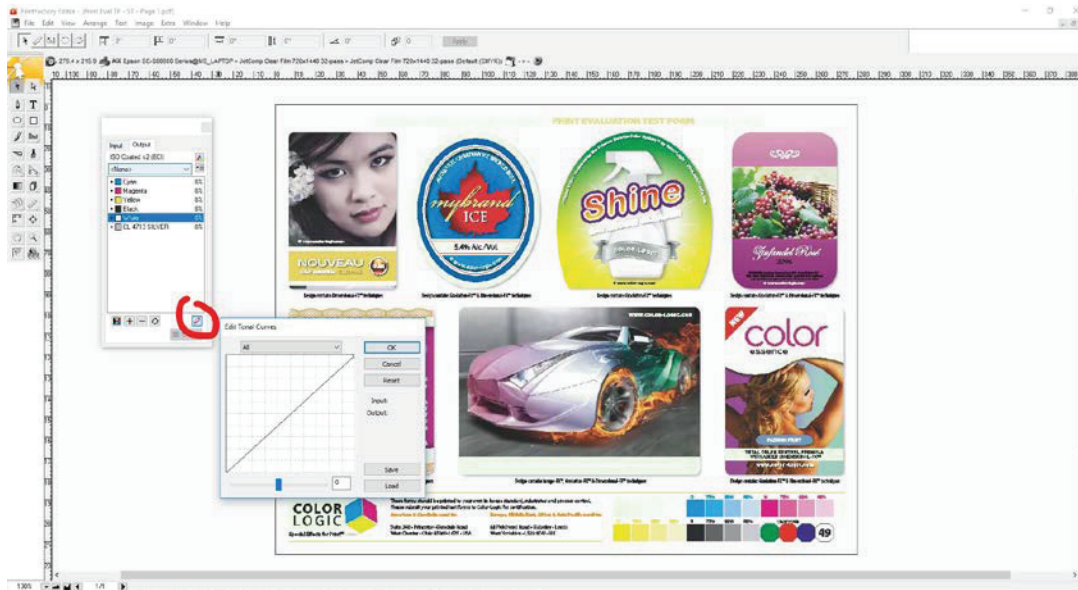
- 1) Open File in **Editor** and select a print mode which uses white



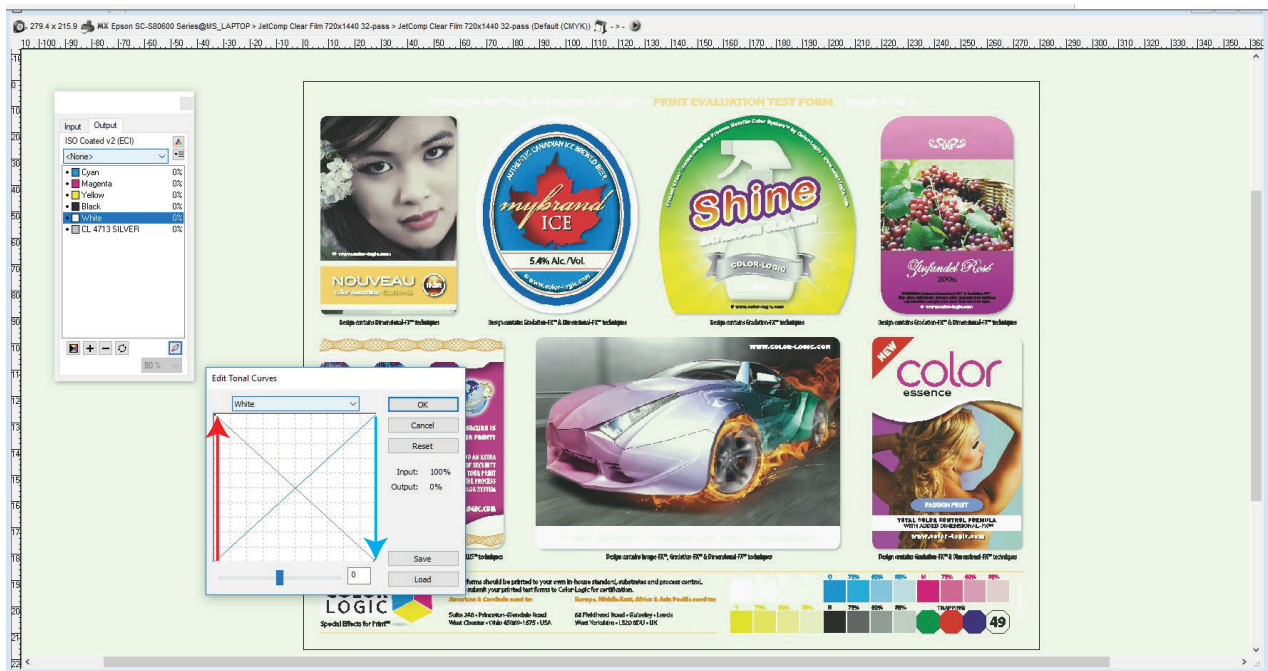
- 2) Select the **Silver Channel**, and then the Option “**Map spot Color**” and change the Output Channel to White



3) Select the white ink Channel and open the Tonal Corrections window by clicking the icon in bottom right corner



4) Pull the 0% fulcrum up to 100% and push the 100% fulcrum down to 0% in order to invert the spot channel



5) Click OK, and Print File