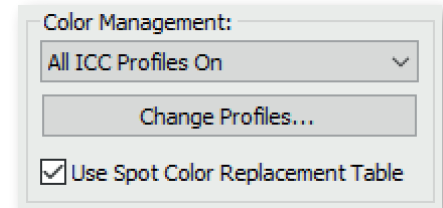
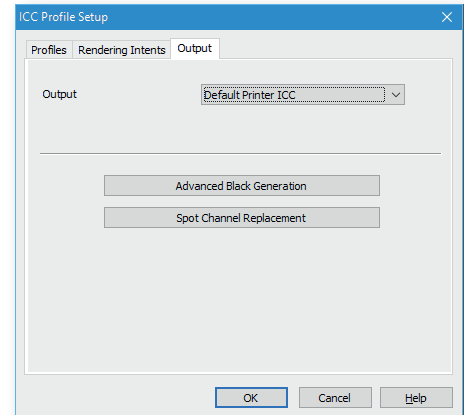


How to map the Color-Logic spot separation (CL 4713 SILVER) to a spot channel in Onyx

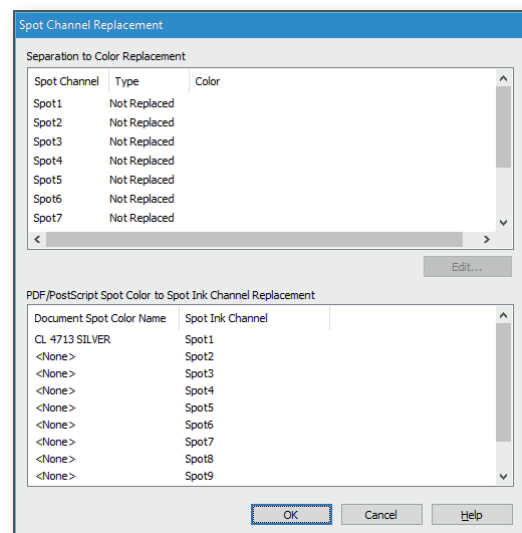
1. In Job Editor, select the **Printer and Media Tab**, and click **“Change Profiles...”** button in the Color Management section.



2. In the **“ICC Profile Setup”** window, click on the **Output** tab, and then the **Spot Channel Replacement** button.



3. In the **“PDF/PostScript Spot Color to Spot Ink Channel Replacement”** section, click in the left column, and enter the spot separation name from your file that you want to map (CL 4713 SILVER) to a spot channel on the printer.



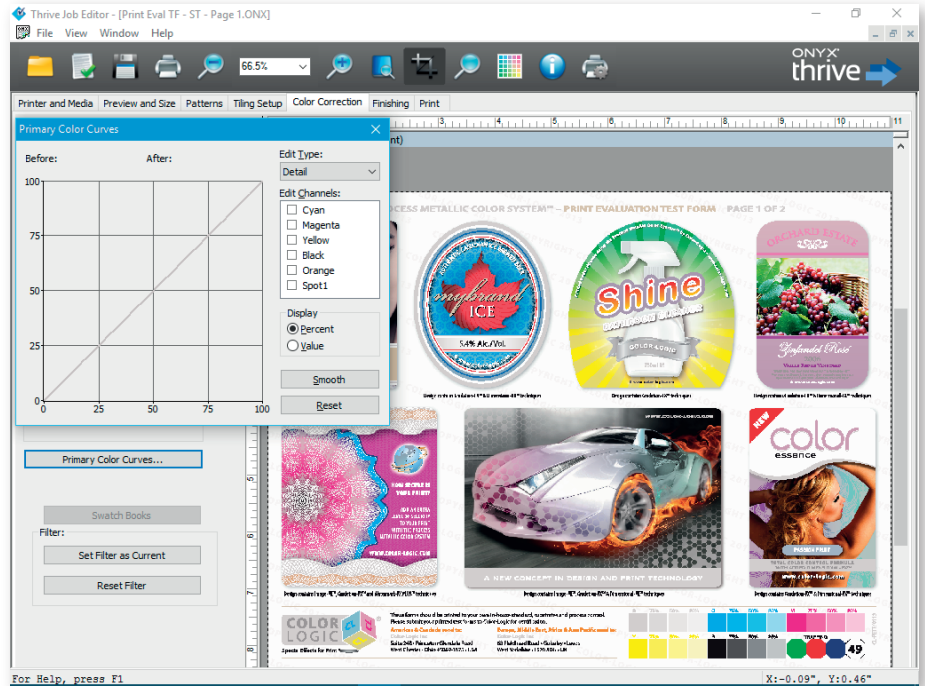
4. Close out of all dialogs and click the **Apply** button on the Printer and Media tab to refresh the preview.

TIP: The spot separation mapping can be set up as a quick set for automation.

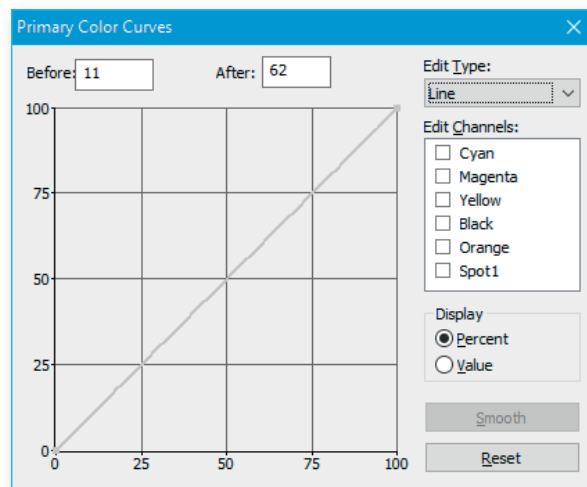
How to invert the Color-Logic spot separation (CL 4713 SILVER) to print with white ink.

Note: This working procedure requires the use of **Primary Color Curves** in **Job Editor**.

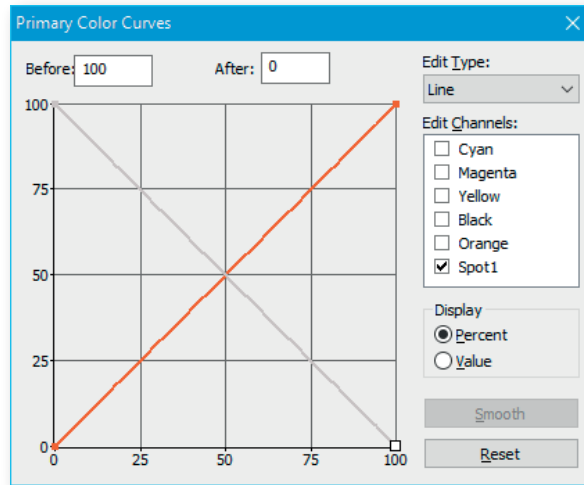
1. In **Job Editor**, go to the **Color Correction** tab, and click on the **Primary Color Curves** button.



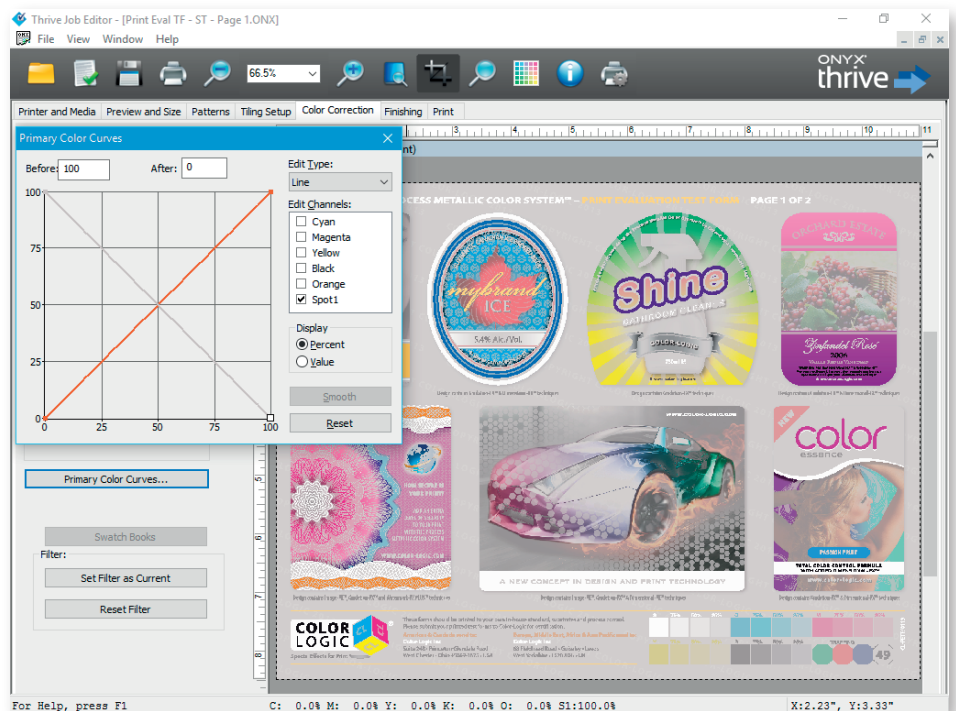
2. Change **"Edit Type:"** to **"Line"**



- Under **"Edit Channels:"** select **Spot1 (CL 4713 SILVER)**, then grab the handles and reverse the slope



- Data for just the channel should now be inverted.



TIP: The color setup can be exported as a filter and added to a quick set for automation.

Supplemental technical support notes:

It may be required to set your RIP with the following settings...

Issue: Failure to display the job correctly at the RIP

Solution: In the **Adobe Rip Options** check the **"Ignore User Input Profiles"** box. Color Management is still applied based on the selected input profile.

The screenshot displays the Adobe RIP software interface. On the left, the 'Printer and Media' panel is visible, showing settings for 'Oce Arizona 1380 GT' printer. Under 'Color Management', 'All ICC Profiles On' is selected. The 'Source Image' section shows 'Format: CMYK + 2 Spots, 8 bits' and 'Resolution: 192.25 x 192.22 DPI'. The 'Contour Cutter Selection' is set to 'None'. The main preview area shows a 'Color-Logic Print Evaluation Test Form' with various graphics including a 'color essence' box, a 'mybrand ICE' beer label, a 'VIP Access All Areas' sign, and a 'YOUR LUXURY BRAND' sign. On the right, the 'Job Properties' panel is open, showing 'Info' and 'Display' sections. Under 'PS/PDF', the 'IgnoreUserInputPr' checkbox is checked. Below this, the 'Configure RIP' panel shows a list of options with 'IgnoreUserInputPr' checked. A note at the bottom of the panel reads 'Note: Only checked con'.