

## Printing the Color-Logic files from **Fiery® Command WorkStation**

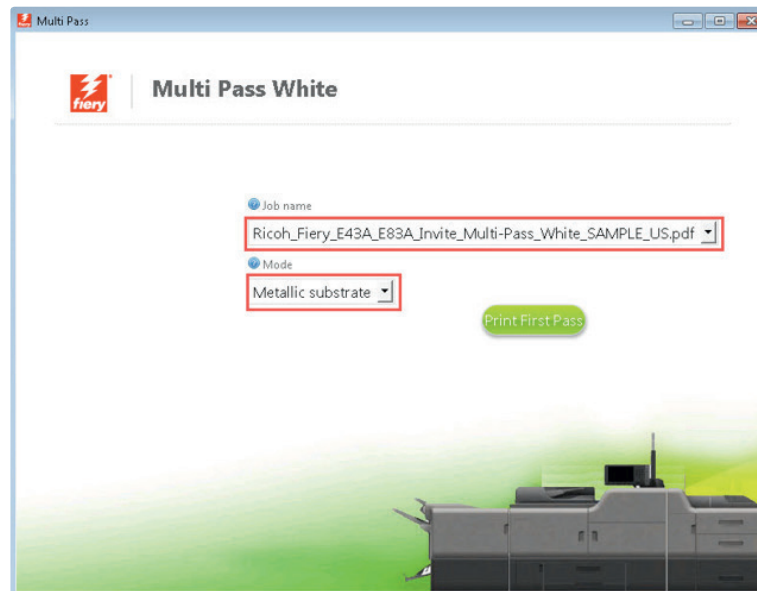
# Using the Fiery **Multi Pass White Application**

Fiery Created a Multi Pass White Application that enables printing of Color-Logic designs with White Toner on metallic substrates that require multi pass processing:

### **Metallic Substrate – Print 2-Pass PDF files with White Toner**

This workflow applies White Toner as a background and omits areas where the Color-Logic Spot Color (CL 4713 SILVER) is applied for the metallic substrate to show through. White is printed on the first pass. CMYK is printed on the second pass.

*The Multi Pass White Application is available as a system patch and can be installed via system update. You can also contact your technical representative for more information on how to get the application installed on your Fiery server.*



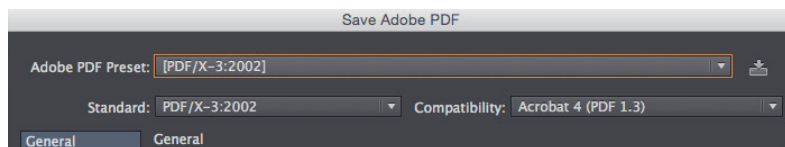
## Using the Fiery® Multi Pass White Application

# Printing on Metallic Substrates

The purpose of this tutorial is to demonstrate how to print a PDF file in a 2-Pass workflow with the Color-Logic “CL 4713 SILVER” Spot Color incorporated in the design, applying White Toner on a metallic substrate using Fiery Command WorkStation and EFI FieryMulti Pass White Application.

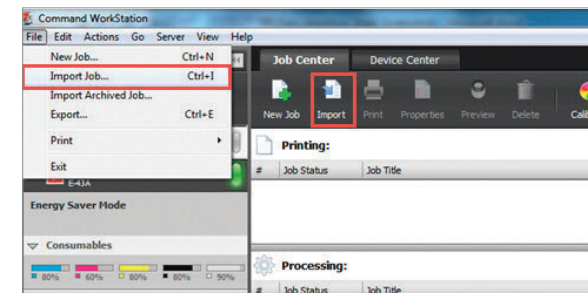
## Basics Design Steps

1. Open or create the Color-Logic design that will be printed on metallic substrate with white toner.
2. Export your **PDF file** as PDF/X-3 (PDF1.3 or newer).

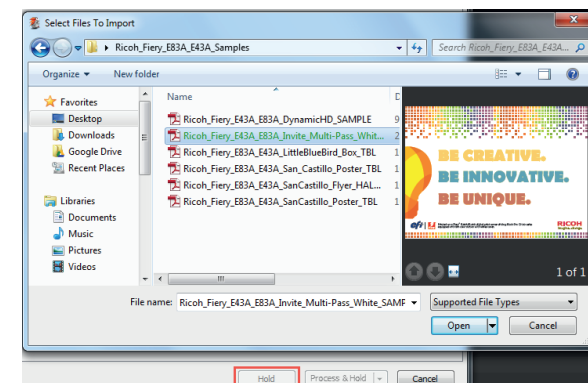


## Printing

1. Open Fiery Command WorkStation and import the desired file by clicking on **File > Import Job** or by clicking on the Import button under the **Job Center tab**.



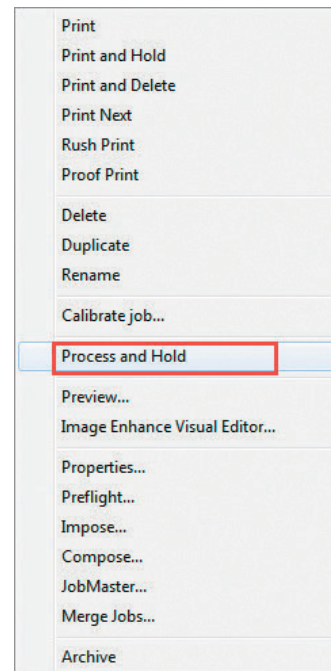
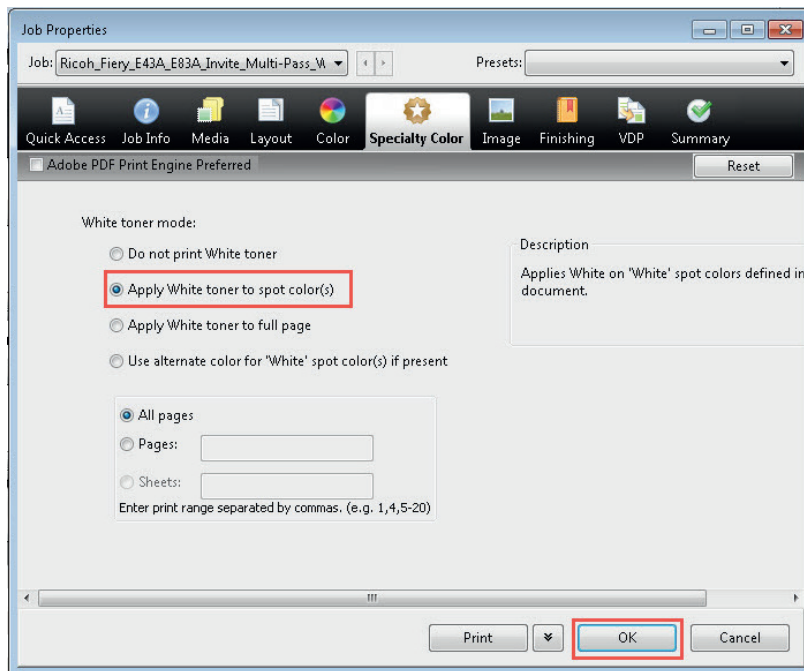
2. To import the file, click on **Add**, browse to the file location, then select **Hold**, which will send the file to the Held queue in Fiery Command WorkStation.



## Printing the 5<sup>th</sup> Color from **Fiery® Command WorkStation**

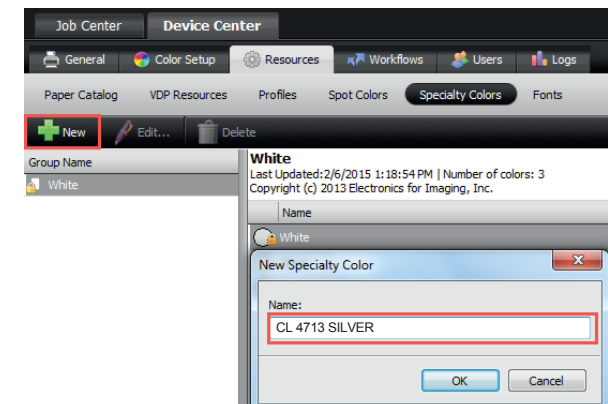
3. Select the file in the Held queue and open **Job Properties** by right-clicking and selecting Properties or by clicking on the Properties button under the **Job Center** tab. Once opened, go to the **Specialty Color** tab and make sure “**Apply White Toner to spot color(s)**” is selected.

Select any other print settings e.g. media type, media weight, number of copies and then **Click OK**. Select the job in the Held queue then right-click to **Process and Hold**.



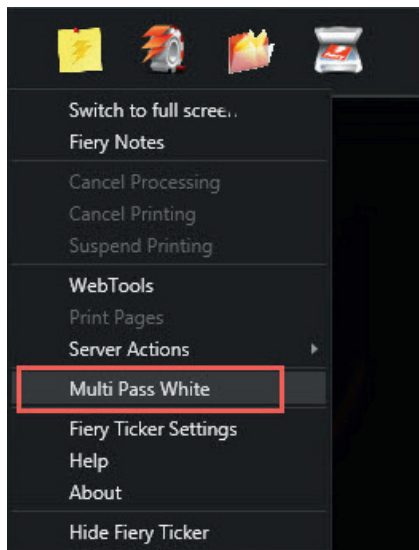
Before you print you need to add the Color-Logic spot colour “**CL 4713 SILVER**” to the specialty color group in Fiery Command WorkStation.

Go to Device Center, click on the **Resources** tab, and select **Specialty Colors**. Select the White specialty color group and click **New**. Type in the name of the spot color (CL 4713 SILVER) and **Click OK**.



## Using the Fiery® Multi Pass White Application

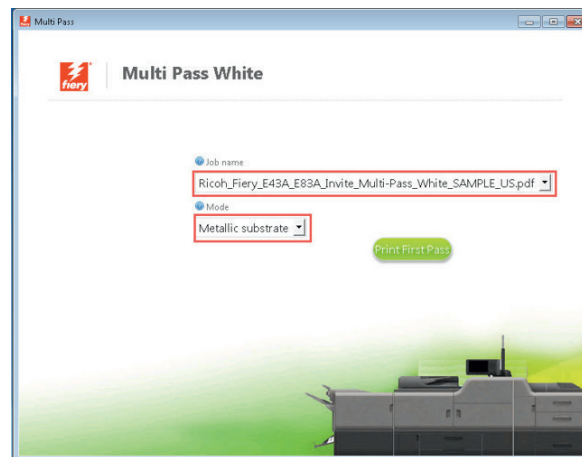
4. To access the application go to the Fiery Advanced Controller Interface desktop, click in the upper left corner and select Multi Pass White from the drop-down menu.



5. Choose the job from the list.

*Note: Only the jobs in the Held queue that are enabled for printing with White Toner appear in the list. If your job does not appear in the list, right-click anywhere in the Multi Pass White window and select "Reload."*

Choose the **Metallic Substrate** mode. Click on the Print First Pass button. The printer will print the first pass of the job (White Toner only).



6. Before you print the second pass, there are a few steps that you need to complete. **Pick up the print** from the output tray. **Place** the printed sheet **in** the **same input tray** that you specified for the job. **Click Print Next Pass.**

