

WHITE TONER



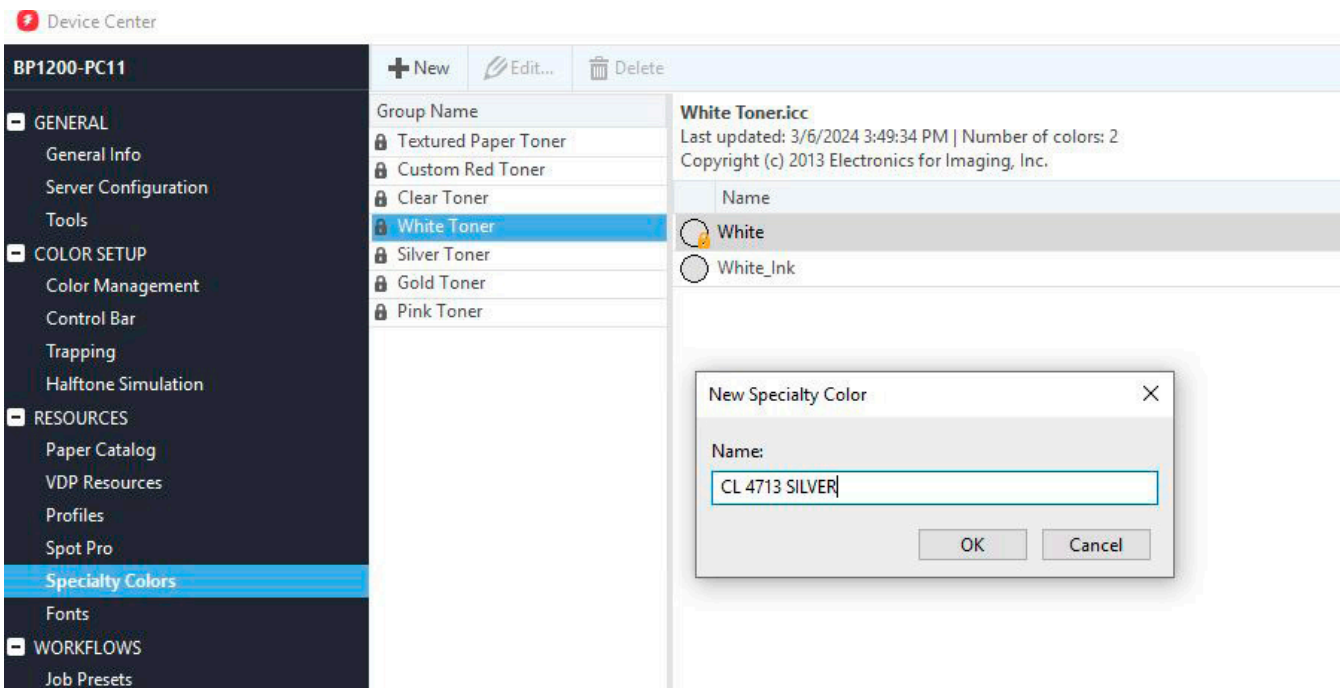
Printing on a SHARP BP-1200S Color Press with SHARP EX-P 6 Print Server Powered by Fiery® using White Toner

We recommend switching on APPE when processing Color-Logic files, to ensure correct overprint and transparency settings are honoured within your artwork.

On the SHARP BP-1200S: make sure that **White Toner** is installed in the **6th (under CMYK)** housing. Create a stock in the Stock Library and assign it to a tray. Make sure the stock is set as a **Metallic** stock.

Ensure that your **EX-P 6 Print Server** is **version 1.1 or higher** and that you're using **Command WorkStation version 6.2.0.243 or newer**.

Setting up the Color-Logic spot color in Fiery Command WorkStation



Go to **Device Center > Resources > Specialty Colors**

Select the **White Toner** group name. Right click and select Add Color.

Enter "**CL 4713 SILVER**" without quotes. Click OK. **Exit** back to the Held queue.

Setting up Job Properties

Drag the Color-Logic job into the Held queue, then double click on the job to open **Job Properties** (or right click and select Job Properties).

HELD (24)							Search
Job Status	Job Title	User	Size	Pages	Copies	Date/Time	
Spooled	CombinedCL.pdf	giselled	1.0 MB	2	1	Today 9:48:12 AM	

In the **Media** tab, select your **Paper Catalog** entry. Make sure the Media type shows as **Metallic**. If it does not, edit your Stock Library entry accordingly.

Job Properties

Job: Color-Logic Standard Color Charts.pdf

Adobe PDF Print Engine Preferred

Paper Catalog: Ecofoil Digital Silver (Select...)

Paper source: Auto tray select

Media type: Metallic/pearl paper

Media weight: 257-300 gsm

Tray alignment

In the **Specialty Colorant** tab, choose **White Toner** to apply **under CMYK**. Make sure **'White' Spot Colors** is selected.

Job Properties

Job: Color-Logic Standard Color Charts.pdf

Adobe PDF Print Engine Preferred

Apply specialty color over CMYK

Pink toner

Apply specialty color under CMYK

White toner

Full page

All printed content

'White' spot colors

Blank area

Do not print 'White' spot colors

All pages

Pages:

Sheets:

Enter print range separated by commas and in ascending order (e.g. 1, 4, 5-20).

Toner limit: 100 %

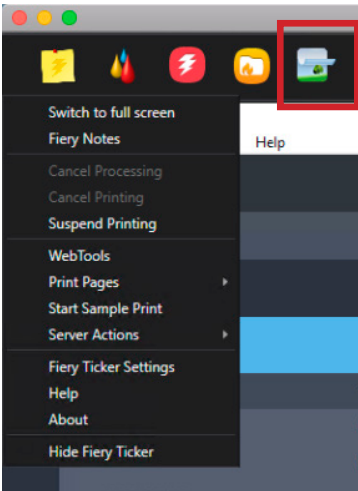
Remove specialty color overlapping CMYK

Invert specialty toner

Description: Description is not available because Two-Way Communication is not enabled. Please refer to Driver Help for instructions to enable Two-Way Communication.

Description: Applies specialty color on White spot colors defined in the document.

Select any other relevant job information (such as duplex), then click OK to exit to the Held queue.



On the NX Station monitor, hover the mouse over the top left corner of the Fiery Ticker bar. Select the **Multi-Pass** icon.

Select your job from the drop-down list. Check **Invert specialty color under CMYK**. Ensure the **Color Separations** look like the below screenshot, then click **Print**.

