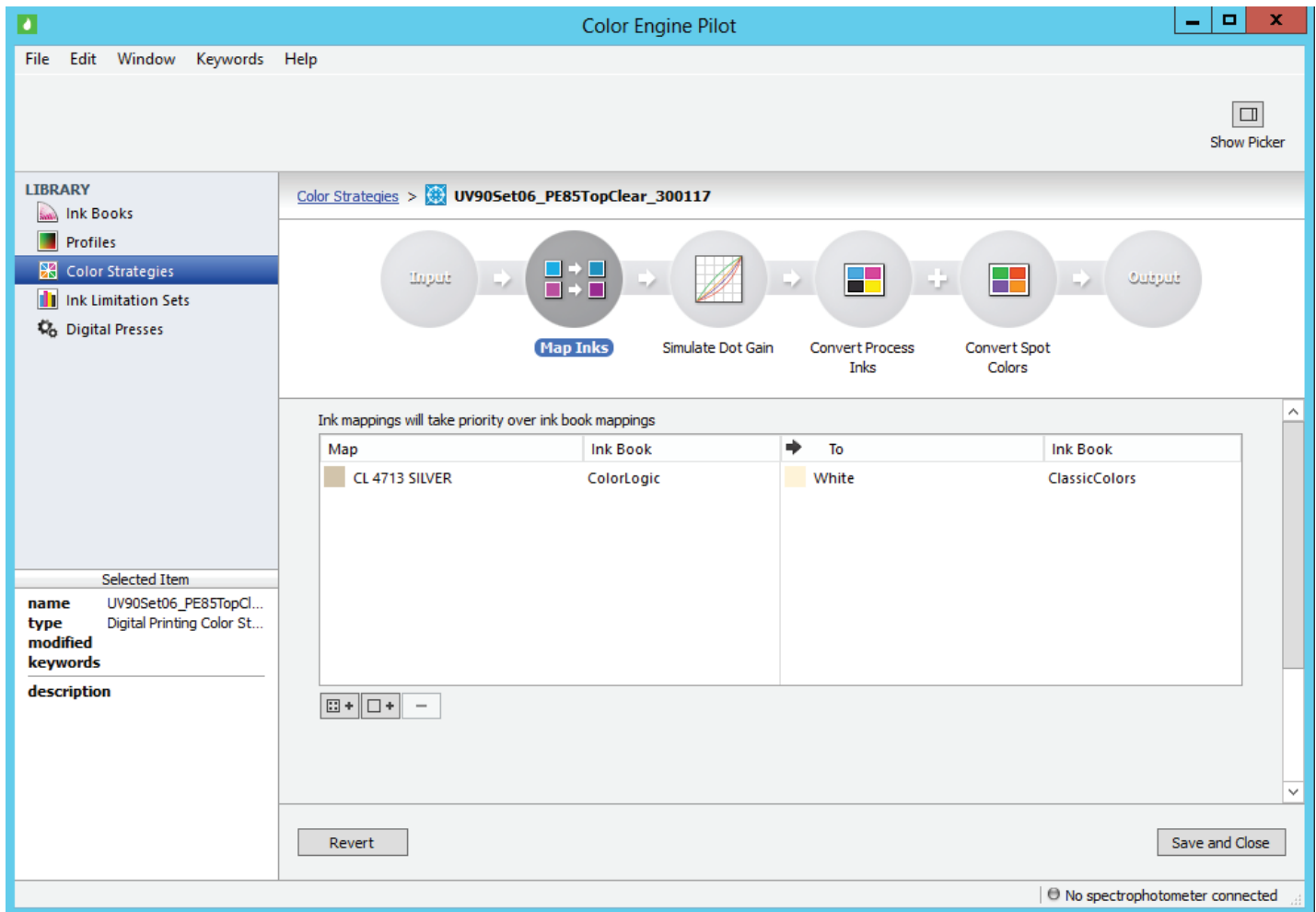


Requires Esko DFEv2.0 with Hotfix 17

Setting up the color strategy

- Within Colour Engine Pilot 13.4, the **CL 4713 SILVER** spot color is remapped to White within **Map Inks**



The screenshot shows the Color Engine Pilot software interface. The main window displays a workflow diagram with the following steps: Input → **Map Inks** → Simulate Dot Gain → Convert Process Inks → Convert Spot Colors → Output. The 'Map Inks' step is currently selected and expanded to show a table of ink mappings.

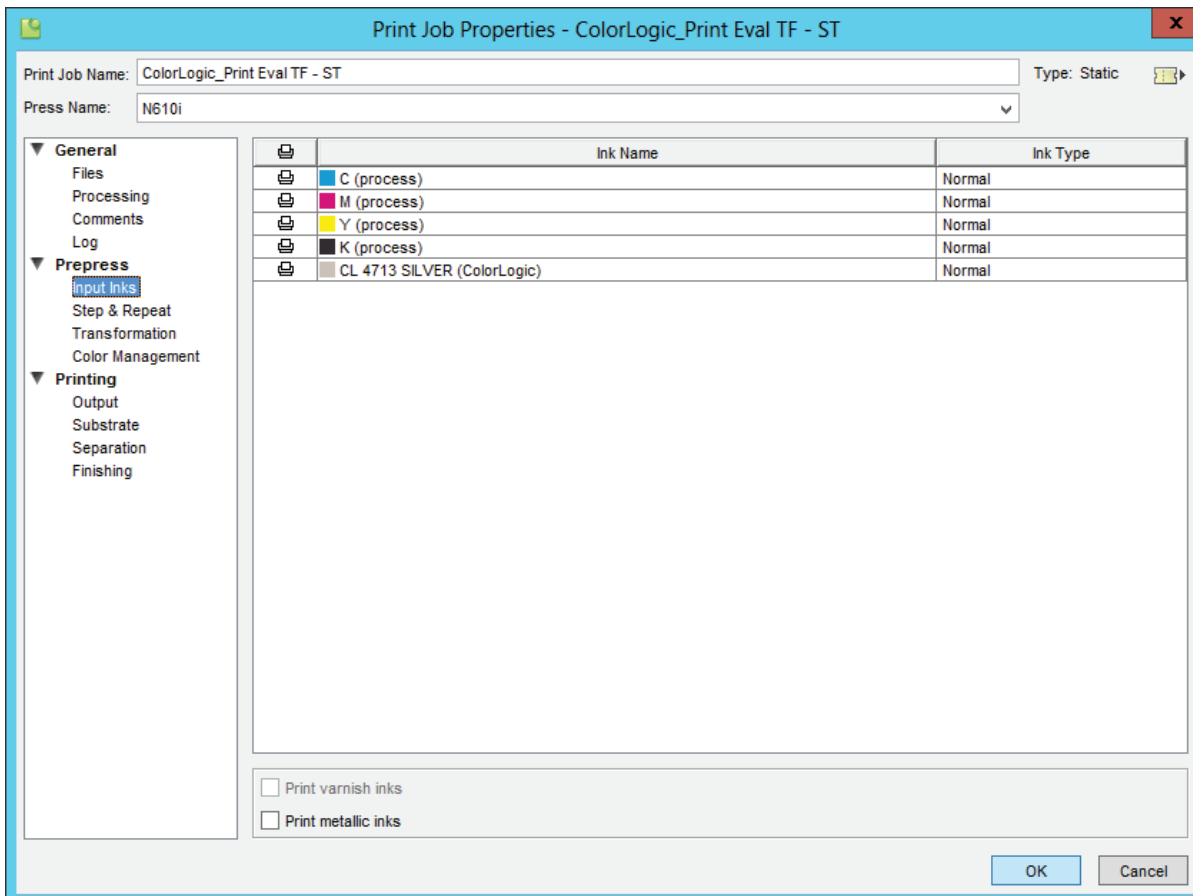
Ink mappings will take priority over ink book mappings

Map	Ink Book	To	Ink Book
CL 4713 SILVER	ColorLogic	White	ClassicColors

Below the table are controls for adding (+), removing (-), and refreshing the mappings. At the bottom of the window, there are 'Revert' and 'Save and Close' buttons. A status bar at the bottom right indicates 'No spectrophotometer connected'.

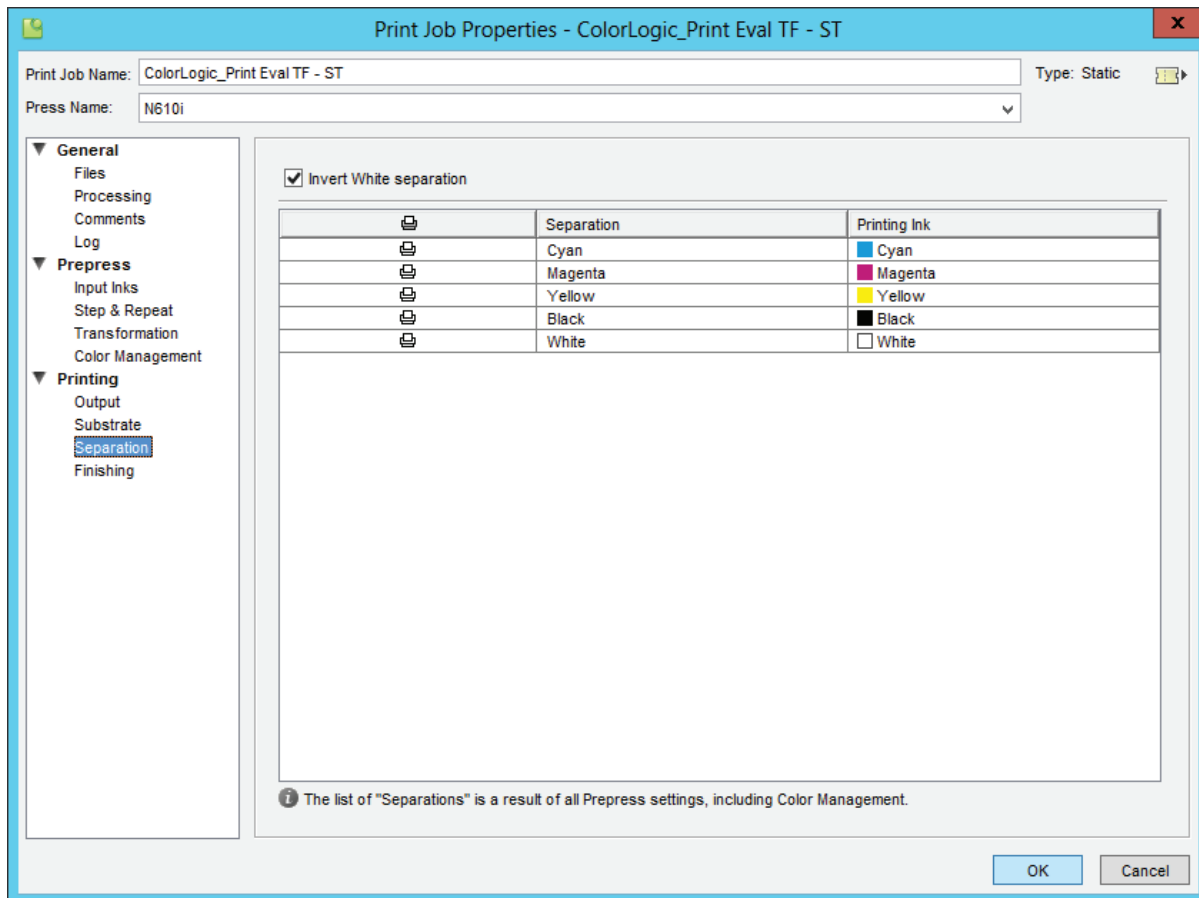
Importing your PDF into the DFE

- When your Color-Logic job is imported into the DFE, the **Input Inks** should show like this:



Inverting to White

- Within the Separation tab, enable “**Invert White separation**” by checking the box and click **OK**.



Limitations:

- Jobs containing both Silver and White in the PDF are not supported.
- In case of a VDP job the CL 4713 SILVER separation must always be present in the background.
Silver in the variable part is supported.
However Silver which is only present in the variable objects the result is not supported.
- Color-Logic is only supported in the Dynamic workflow, not in the Classic workflow.