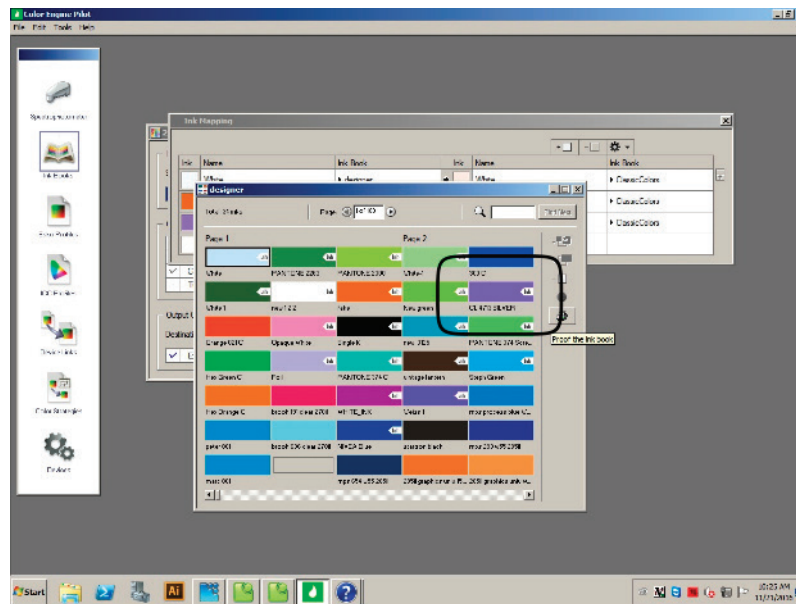
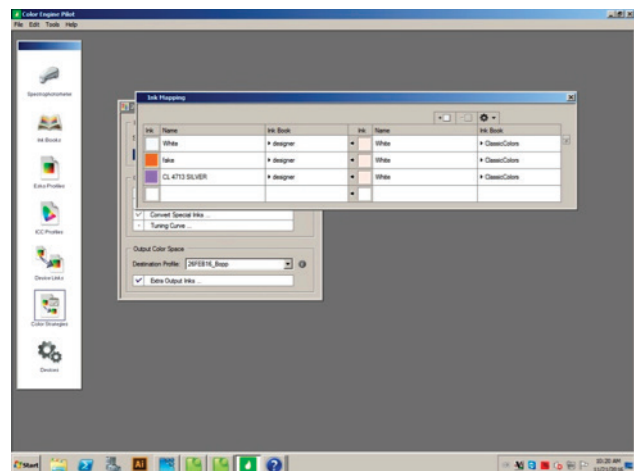
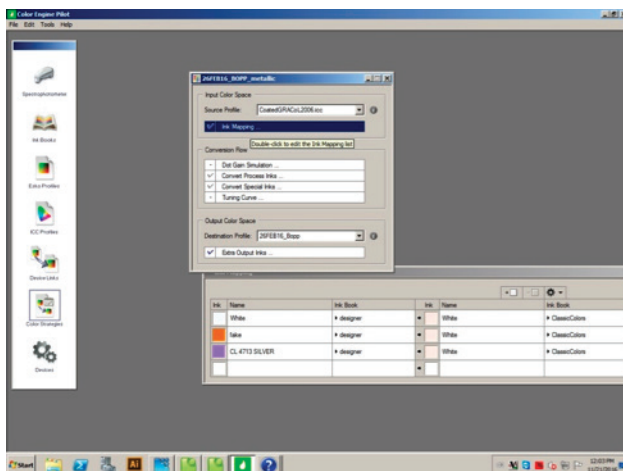


Using the Color-Logic plugins for Mark Andy ProWorks DFE workflow:

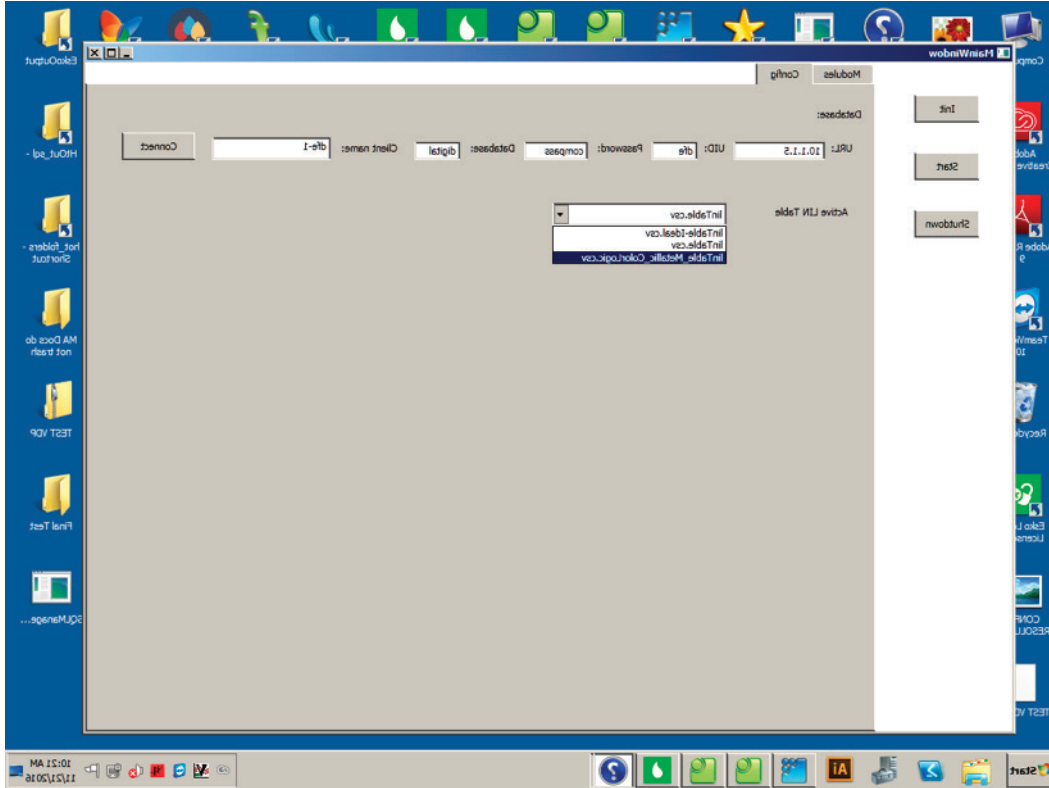
1. Set up the files using the Color-Logic plugins for Adobe CS/CC (Illustrator, InDesign & Photoshop)
2. On the DFE, in Color Engine Pilot, open the Designer ink book and create a new ink and name it to match the Color Logic Silver ink used in the PDF artwork file. (CL 4713 SILVER)



3. Choose the appropriate color strategy in Color Engine Pilot for the substrate you will be printing on and double click "Ink Mapping". Re-map the CL 4713 ink from the Designer ink book that was just created to White/classic colors as shown below.



4. Create a new print job on the DFE and RIP the job.



5. Prior to sending the RIP'd job to the press, the linearization table must be switch to the Metallic Linearization table in the config menu of the offpress application as shown.
6. Once the linearization table has been changed in the offpress application to the metallized version, go back to the DFE que and right click to send the job to the press. All of the artwork objects that are using the Color Logic silver ink in the original file will be converted to white and inverted for printing.