

*Digital Series DSiQ and DSHD*

Color-Logic

Digital Front End

# **Configuration Guide**

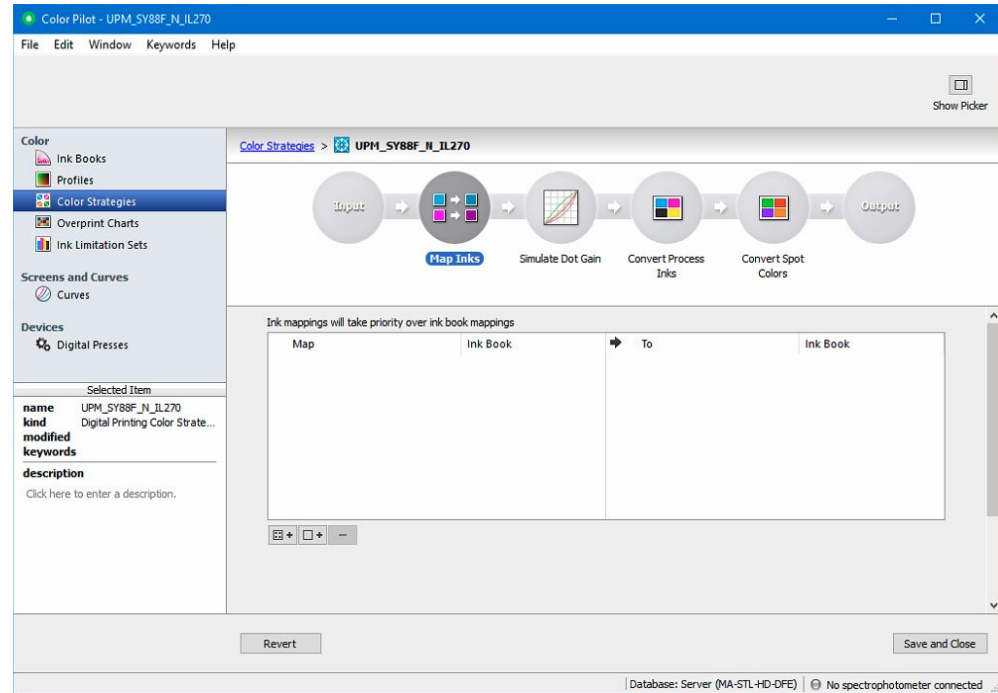


# Esko DFE Configuration Guide for Color-Logic Output Using Esko Digital Front End (DFE) Versions 2.2.3 to 3.1

Configuration starts with Color Pilot and a Color Strategy that has been built for the target substrate.

- Open Color Pilot
- Select Color Strategy in the left Panel
- Select and open the target Color Strategy
- Select the Map Inks bubble

Next Slide

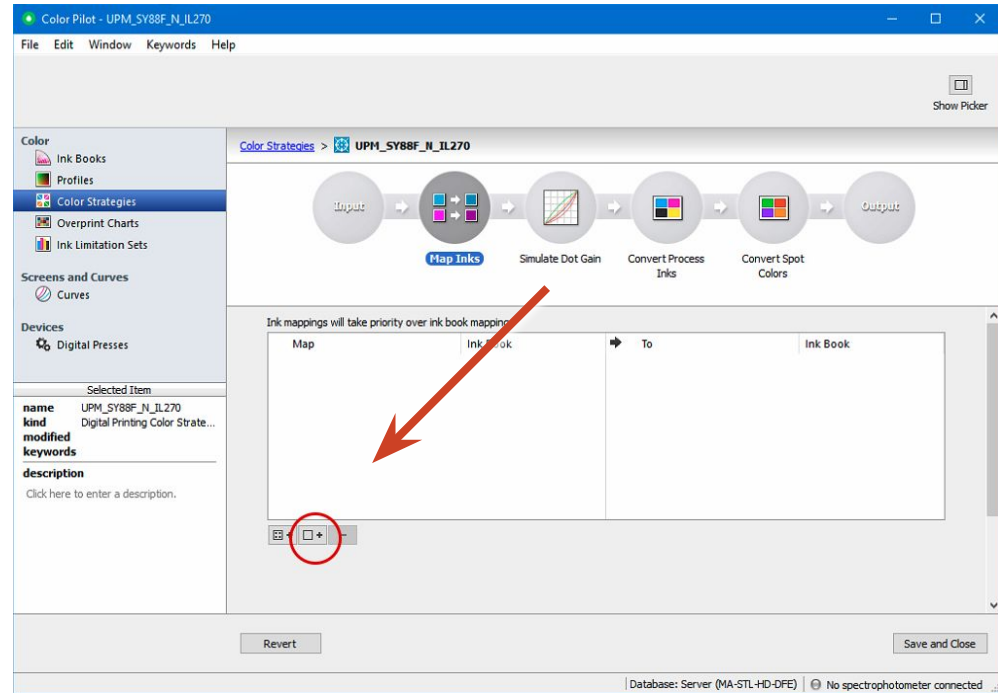


# Esko DFE Configuration Guide for Color-Logic Output Using Esko Digital Front End (DFE) Versions 2.2.3 to 3.1

Configuration Continued

- Select "Add Ink Mapping"

Next Slide



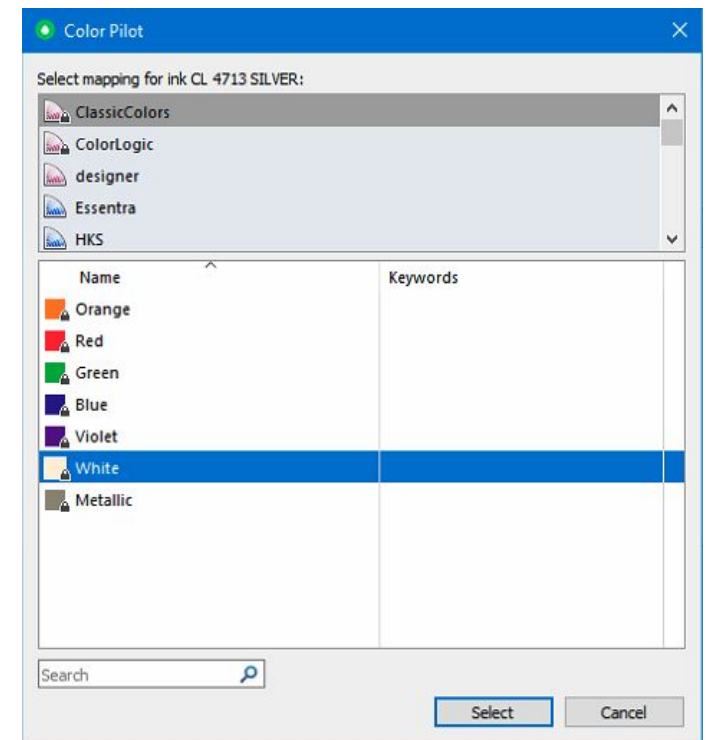
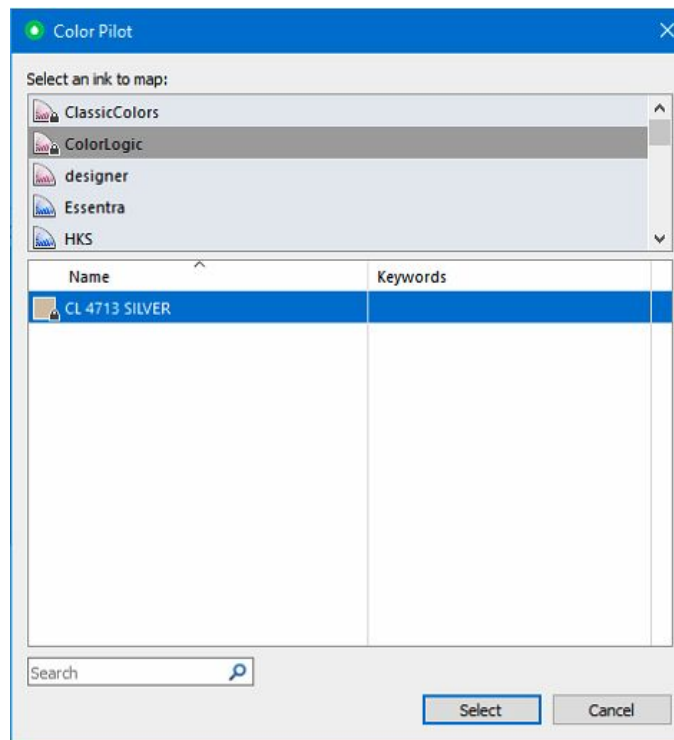
# Esko DFE Configuration Guide for Color-Logic Output Using Esko Digital Front End (DFE) Versions 2.2.3 to 3.1

Configuration Continued

Add the Ink mapping from CL 4713 SILVER to White by:

- Select the ColorLogic Ink Book
- Select CL 4713 SILVER
- Click the Select Button
  
- Select the ClassicColors Ink Book
- Select White
- Click the Select Button

Next Slide

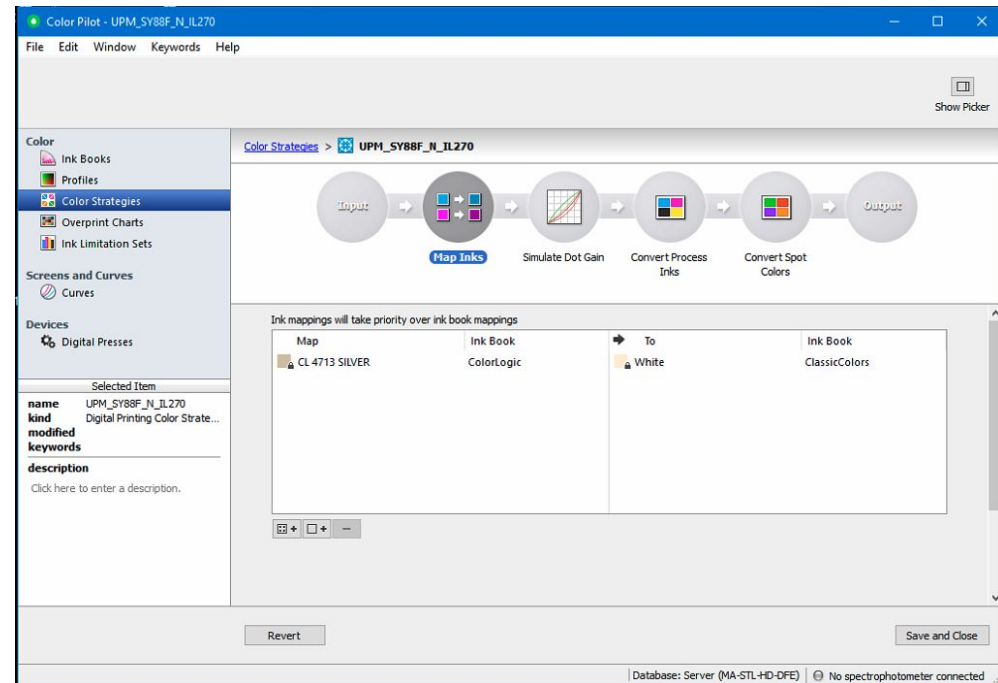


# Esko DFE Configuration Guide for Color-Logic Output Using Esko Digital Front End (DFE) Versions 2.2.3 to 3.1

Configuration Continued

Color Pilot Map Inks bubble should look like this when finished.

Next Slide

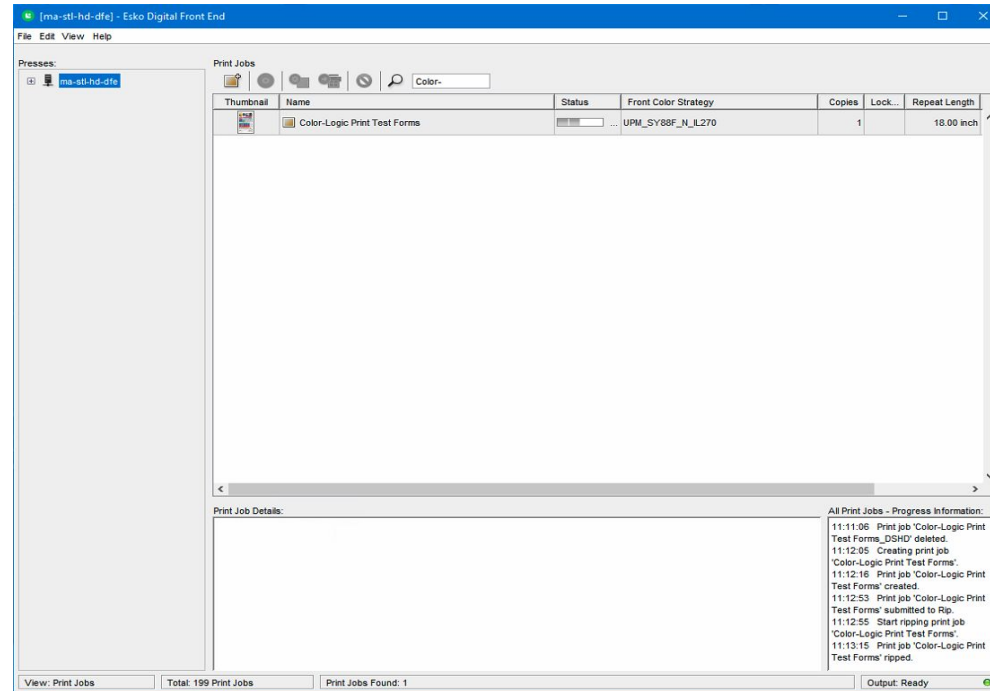


# Esko DFE Configuration Guide for Color-Logic Output Using Esko Digital Front End (DFE) Versions 2.2.3 to 3.1

Configuration Continued

- Return to the Esko DFE Client

Next Slide



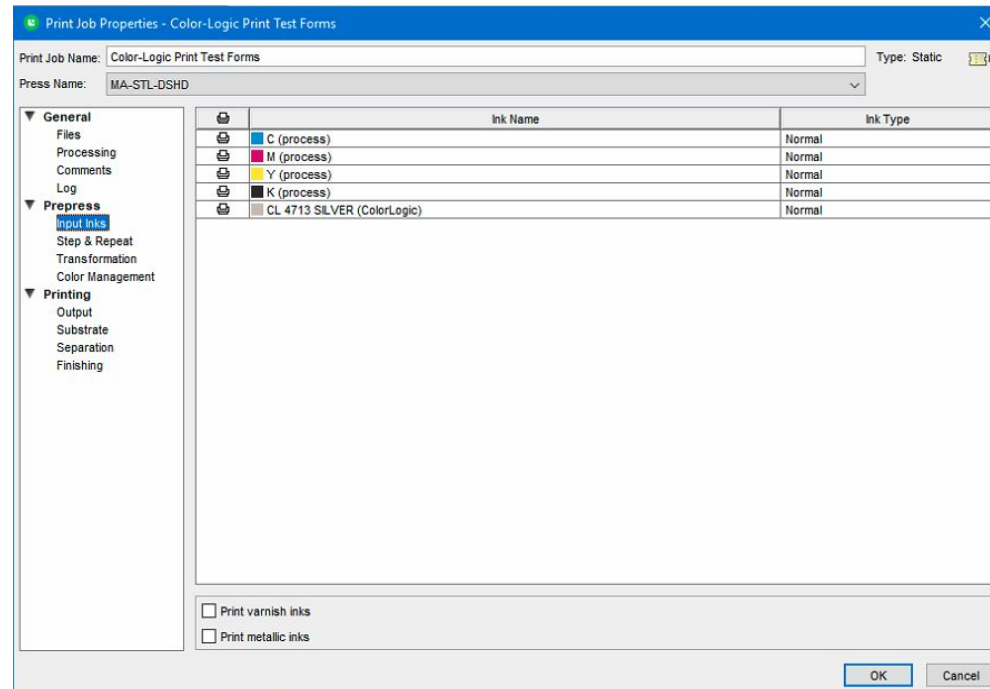
# Esko DFE Configuration Guide for Color-Logic Output Using Esko Digital Front End (DFE) Versions 2.2.3 to 3.1

Configuration Continued

- Select Input Inks to check that CL 7413 SILVER (ColorLogic) is available

**NOTE:** Incoming PDF cannot contain White before processing. The CS 4713 SILVER becomes the White.

Next Slide



# Esko DFE Configuration Guide for Color-Logic Output Using Esko Digital Front End (DFE) Versions 2.2.3 to 3.1

## Configuration Continued

- Select Separation on the left panel
- Select Invert White separation (this will invert the CL 4713 SILVER that was mapped to White in Color Pilot)

After configuration is complete, job can be ripped, checked and sent to the press.

