

Using the Fiery® Single Pass White Application

***** IMPORTANT *****

THE WHITE TONER MUST BE AT THE FRONT OF THE PRESS (FIRST DOWN PRINTING!)

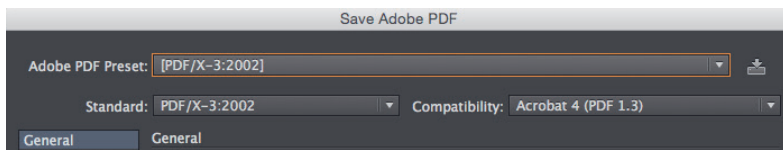
IF YOU DO NOT KNOW HOW TO CHANGE THE POSITION OF THE WHITE TONER, CONTACT YOUR LOCAL RICOH REPRESENTATIVE

Printing on Metallic Substrates

The purpose of this tutorial is to demonstrate how to print a PDF file in a 1-Pass workflow with the Color-Logic "CL 4713 SILVER" Spot Color incorporated in the design, applying White Toner on a metallic substrate using Fiery Command WorkStation and Fiery Single Pass White Application.

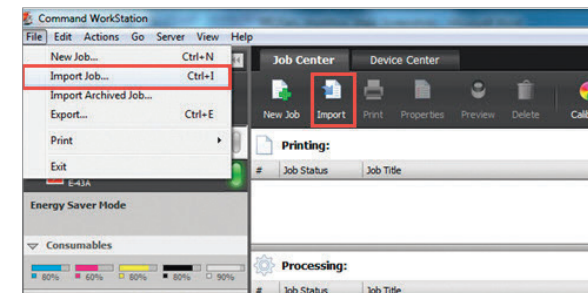
Basics Design Steps

1. Open or create the Color-Logic design that will be printed on metallic substrate with white toner.
2. Export your **PDF file** as PDF/X-3 (PDF1.3 or newer).

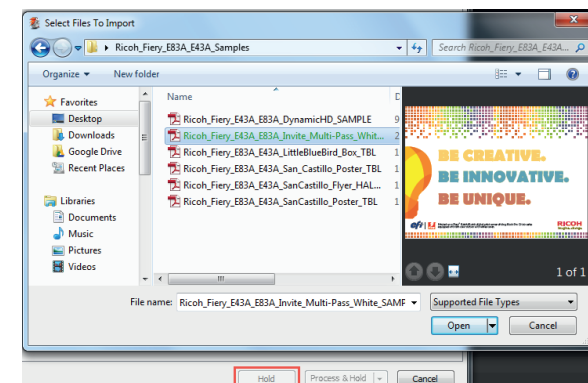


Printing

1. Open Fiery Command WorkStation and import the desired file by clicking on **File > Import Job** or by clicking on the Import button under the **Job Center** tab.



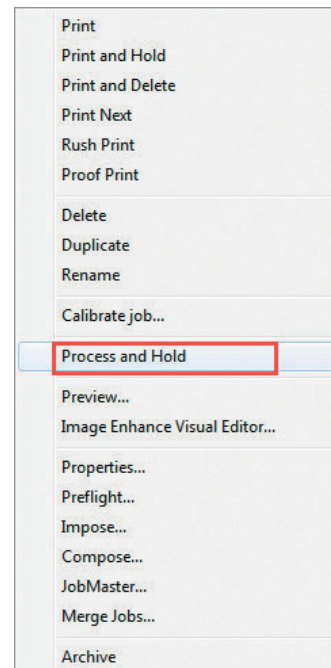
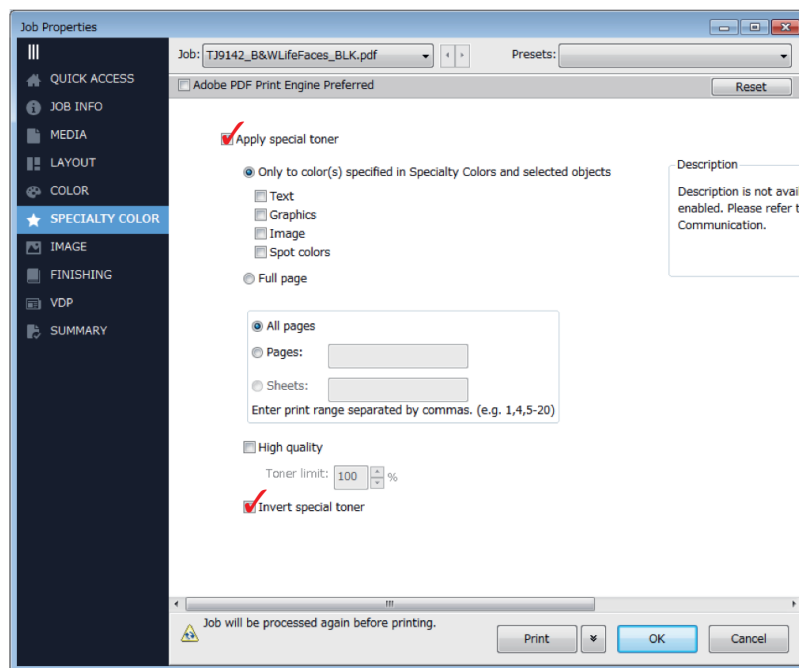
2. To import the file, click on **Add**, browse to the file location, then select **Hold**, which will send the file to the Held queue in Fiery Command WorkStation.



Using the Fiery® Single Pass White Application

3. Select the file in the Held queue and open **Job Properties** by right-clicking and selecting Properties or by clicking on the Properties button under the **Job Center** tab. Once opened, go to the **Specialty Color** tab and make sure “**Apply Special Toner**” is selected, and check the “**Invert Special Toner**” box.

Select any other print settings e.g. media type, media weight, number of copies and then **Click OK**. Select the job in the Held queue then right-click to **Process and Hold**.



Before you print you need to add the Color-Logic spot colour “**CL 4713 SILVER**” to the specialty color group in Fiery Command WorkStation.

Go to Device Center, click on the **Resources** tab, and select **Specialty Colors**. Select the White specialty color group and click **New**. Type in the name of the spot color (CL 4713 SILVER) and **Click OK**.

