

Using the EFI™ Fiery® Single Pass Silver Application

***** IMPORTANT *****

THE SILVER TONER MUST BE AT THE FRONT OF THEPRESS (FIRST DOWN PRINTING!)

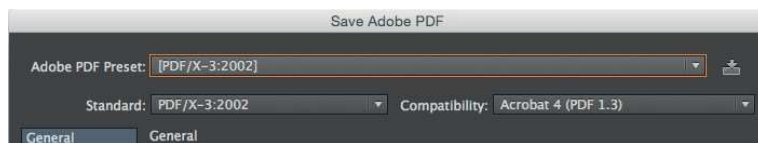
IF YOU DO NOT KNOW HOW TO CHANGE THE POSITION OF THE SILVER TONER, CONTACT YOUR LOCAL RICOH REPRESENTATIVE

Printing with Metallic Toner

The purpose of this tutorial is to demonstrate how to print a PDF file in a I-Pass workflow with the Color-Logic “CL 4713 SILVER” Spot Color incorporated in the design, applying Silver Toner on a substrate using Fiery Command WorkStation and EFI Fiery Single Pass Silver Application.

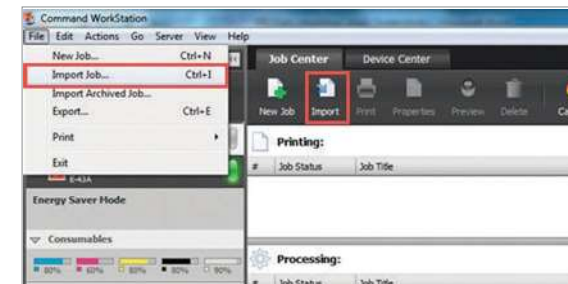
Basics Design Steps

1. Open or create the Color-Logic design that will be printed with silver toner.
2. Export your PDF file as PDF/X-3 (PDF1.3 or newer).

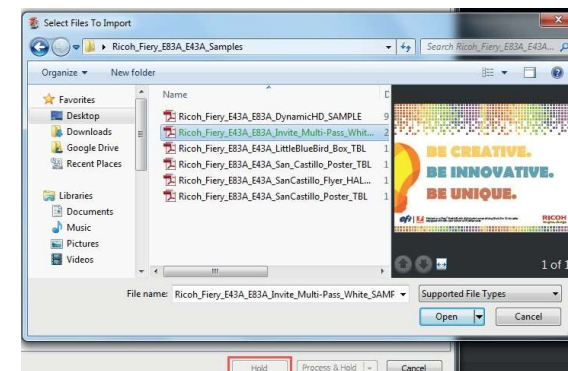


Printing

1. Open Fiery Command WorkStation and import the desired file by clicking on **File > Import Job** or by clicking on the Import button under the Job Center tab.



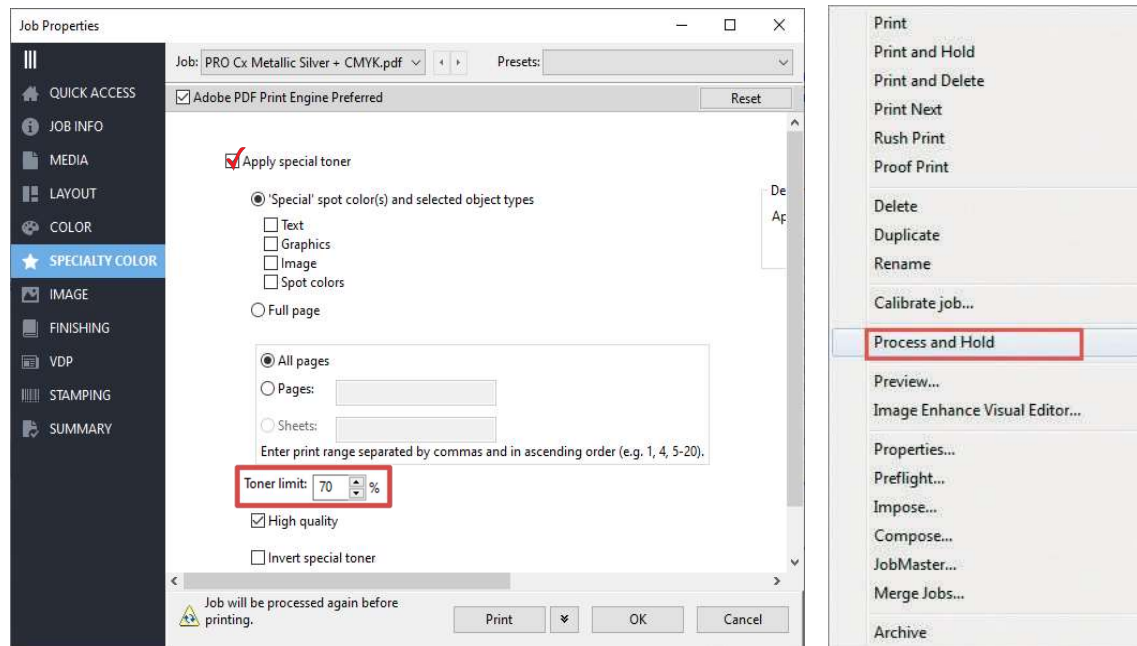
2. To import the file, click on **Add**, browse to the file location, then select **Hold**, which will send the file to the Held queue in Fiery Command WorkStation.



Using the EFI™ Fiery® Single Pass Silver Application

3. Select the file in the Held queue and open **Job Properties** by right-clicking and selecting Properties or by clicking on the Properties button under the **Job Center** tab. Once opened, go to the **Specialty Color** tab and make sure “**Apply Special Toner**” is selected and set “**Toner Limit to 70%**”.

Select any other print settings e.g. media type, media weight, number of copies and then **Click OK**. Select the job in the Held queue then right-click to **Process and Hold**.



Before you print you need to add the Color-Logic spot colour “**CL 4713 SILVER**” to the specialty color group in Fiery Command WorkStation.

Go to Device Center, click on the **Resources** tab, and select **Specialty Colors**. Select the Silver specialty color group and click **New**. Type in the name of the spot color (CL 4713 SILVER) and **Click OK**.



Recommendations

When printing with Silver Toner – for the best results (more reflective) set the Toner Limit to 70%